

GORSLAS WARD: ELECTORAL DIVISION PROFILE

Policy Research and Information Section, Carmarthenshire County Council, May 2014

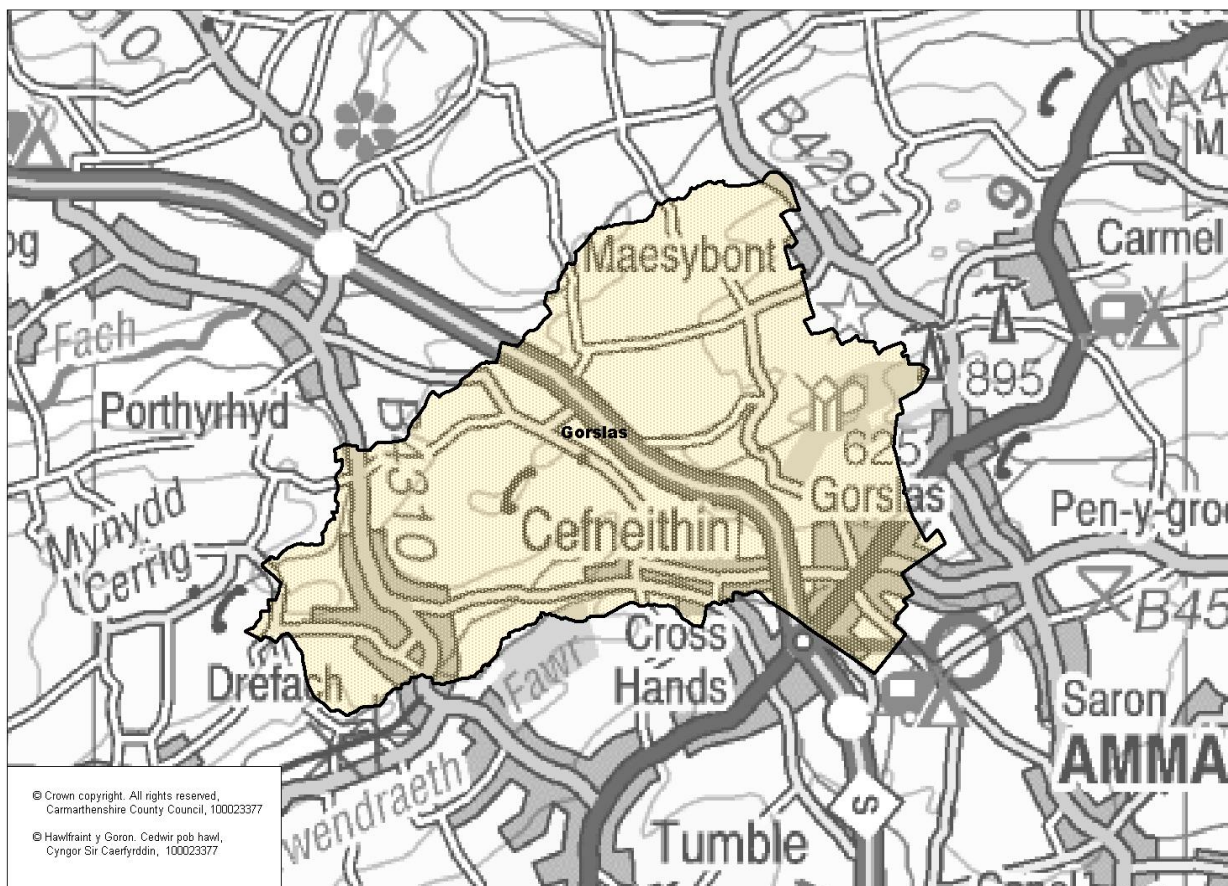
Councillors (Electoral Vote 2012, Turnout = 50.44%): Terry Davies (Labour) and Darren Price (Plaid Cymru).

Electorate (2014): 3452

Population: 4,141 (2012 Mid Year Population Estimates, ONS)

Welsh Assembly and UK Parliamentary Constituency: Carmarthenshire East & Dinefwr

Council owned Facilities: Cefneithin C.P. School, Drefach C.P. School, Gorslas C.P. School, Ysgol Gyfun Maes Yr Yrfa, Gwendraeth Comprehensive School, Llyn Llech Owain Country Park.



Location: Approximately 20km from Carmarthen Town

- ⇒ Regeneration Designations: Rural Development Plan 2007-2013 eligible ward
- ⇒ Area: 16.51km²
- ⇒ Population Density: 251 people per km²
- ⇒ Population Change: 2001-2012: +424 (+11.4%)
- ⇒ Major Employers: Carmarthenshire County Council (schools and leisure)

POPULATION STATISTICS 2012 Mid Year Population Estimates

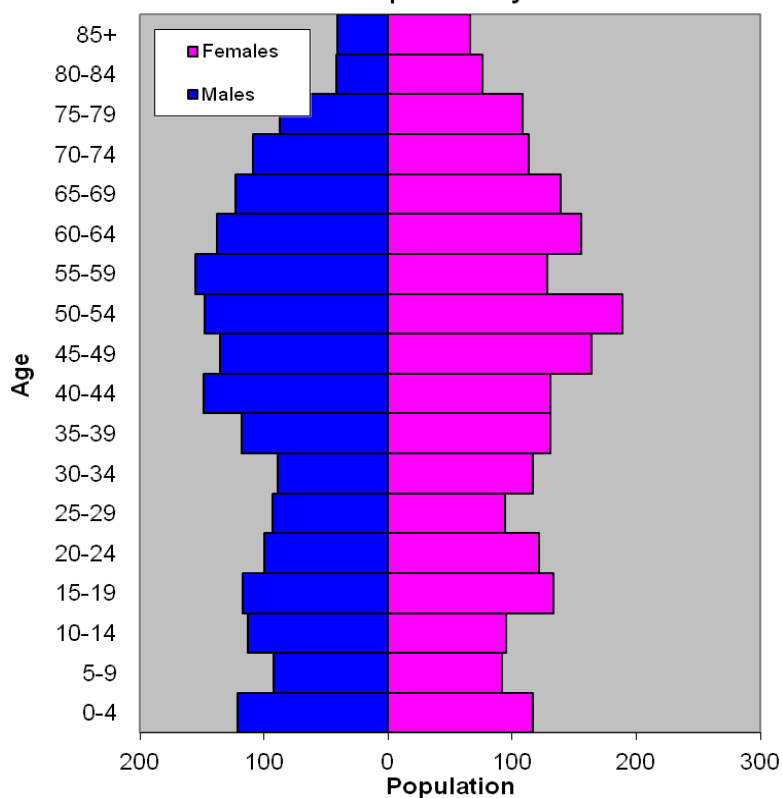
Age Structure	Gorslas Population	Gorslas %	Carmarthenshire %
Aged: 0-4	238	5.7	5.6
5-14	392	9.5	11.0
15-24	472	11.4	11.8
25-44	922	22.3	22.1
45-64	1213	29.3	28.0
65-74	484	11.7	11.7
75+	420	10.1	9.8
Total	4,141	100	100

Births & Deaths	Gorslas	Carmarthenshire
Birth (2012)	43	1,995
Births Rate	10.4	10.8
Deaths (2012)	46	2,135
Death Rate	11.1	11.6

Source: Vital Statistics 2012, ONS.

Note: birth/death rates expressed per 1000 population.

Gorslas Ward Population by Gender



Source: aggregated lower Super Output Area (LSOA) Small Area Population Estimates, 2012, Office for National Statistics (ONS)

- ⇒ 13th highest ward population in Carmarthenshire, and 20th highest population density.
- ⇒ Highest proportion of people aged over 45.
- ⇒ Slightly higher proportion of people with limiting long term illness
- ⇒ Over 20% higher proportion of Welsh Speakers than the Carmarthenshire average.

2011 Census Data

Population: Key Facts	Gorslas	Gorslas %	Carmarthenshire
People: born in Wales	3211	79.0	76.0
born outside UK	87	2.2	4.1
in non-white ethnic groups	39	0.9	1.9
with limiting long-term illness	1082	26.7	25.4
with no qualifications (aged 16-74)	853	25.1	26.8
with higher level qualifications (aged 16-74)	878	25.8	23.9
able to speak Welsh	2523	64.1	43.9

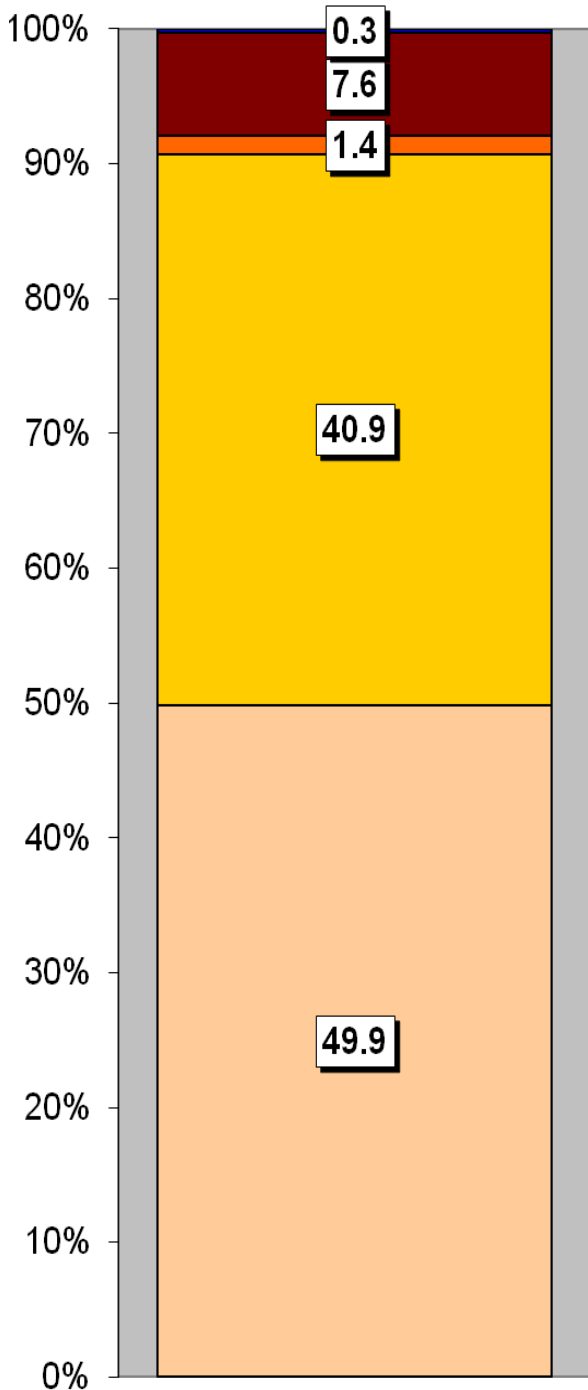
Household Composition	Gorslas	Gorslas %	Carmarthenshire
Total Households/ (Average Household Size)	1735	(2.3)	(2.3)
Household Type: one person: pensioner	285	16.4	14.8
one person: other	212	12.2	15.4
one family: all pensioners	181	10.4	9.8
one family: married couple	658	38.0	34.1
one family: cohabiting couple	138	7.9	8.7
one family: lone parent	169	9.7	11.3
one family: other	92	5.4	5.9

Source: 2011 Census, ONS

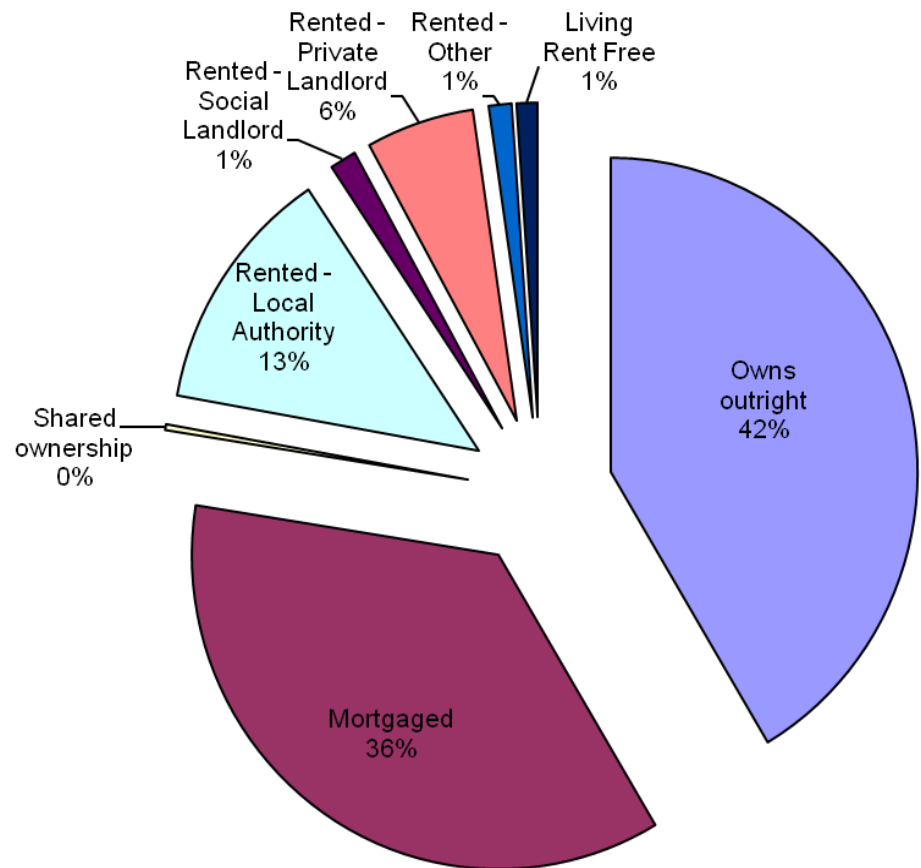
HOUSING

The area's housing consists largely of detached and semi-detached accommodation, which combined is over 90% of the accommodation. The smallest proportion of housing is the caravan or other mobile temporary accommodation. The ward consists of 222 local authority owned properties and 24 Housing Association properties.

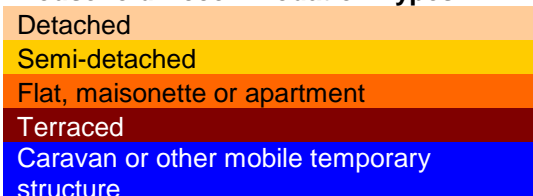
Household Accommodation Types



Household Tenure	%
Owns outright	41.5
Mortgaged	36.1
Shared ownership	0.3
Rented - Local Authority	12.8
Rented - Social Landlord	1.4
Rented - Private Landlord	5.7
Rented - Other	1.2
Living Rent Free	1.1



Household Accommodation Types



SOCIO-ECONOMIC CHARACTERISTICS

- ⇒ The estimated median household income for Gorslas, based on CACI's 2013 'PayCheck' data, is £26,685 which is the 8th highest (of 58 wards) in Carmarthenshire and 14.6% above the Carmarthenshire median of £23,284.
- ⇒ The social profile information indicates a higher than average level of people being in higher and lower managerial and professional administrative occupations (Levels 1-2).

Social Profile	Gorslas	%	Carmarthenshire %
<i>All people aged 16-74 in households</i>	2997	100	100
1: Higher Managerial & Professional Admin. Occupations	464	15.5	13.8
2: Lower Managerial & Professional Admin. Occupations	673	22.5	19.9
3: Intermediate Occupations	397	13.2	11.6
4: Small Employers & Own Account Workers	296	9.9	12.6
5: Lower Supervisory & Technical Occupations	231	7.7	7.6
6: Semi-routine Occupations	448	14.9	16.7
7: Routine Occupations	405	13.5	13.0
8: Never Worked & Long Term Unemployed	117	3.9	4.9

Source: 2011 Census, ONS

ECONOMY AND LABOUR MARKET

Benefit Claimants	Gorslas	Rate %	Carmarthenshire Working Population %
Unemployment Benefit (JSA): April 2014	25	1.0	2.5
Incapacity Benefits (ESA/IB/SDA) November 2013	225	8.8	9.2
Income Support: November 2013	50	2.0	2.5
Disability Living Allowance: November 2013	385	15.0	14.3
Pension Credit: November 2013	200	7.8	8.0
State Pension Claimants: November 2013	1,000	39.1	39.0

Source: Jobcentre Plus administrative system Dept. for Work & Pensions

Economic Status (people aged 16-74)	Gorslas	Gorslas %	Carmarthenshire %
Economically Active	1943	64.8	64.9
Employees: Part-time	399	13.3	13.9
Employees: Full-time	1132	37.8	33.7
Self-employed	256	8.5	11.0
Unemployed	86	2.9	3.7
Full-time Student	70	2.3	2.5
Economically Inactive	1054	35.2	35.1
Retired	585	19.5	18.1
Student	135	4.5	4.5
Looking after home/family	86	2.9	3.8
Permanently sick/disabled	192	6.4	6.8
Other	56	1.9	1.9

Source: 2011 Census, ONS

WELSH INDEX OF MULTIPLE DEPRIVATION (WIMD)

WIMD 2011 based on fine-grained geography of lower Super Output Areas (LSOAs). The WIMD 2011 is compiled from eight domains, Income, Employment, Health, Education, Housing, Access to Services, Physical Environment and Community Safety and is published at Lower Super Output Area of which there are 112 in Carmarthenshire.

Under WIMD, where Rank 1 is the most deprived, **Gorslas 1** ranks 75 out of 112 LSOAs in Carmarthenshire and is ranked 1091 in Wales from 1896 LSOAs. **Gorslas 2** ranks 58 most deprived area in Carmarthenshire and is ranked 927 in Wales.

The highest level of deprivation attributed to **Gorslas 1** is the Physical Environment Domain, being ranked 37th in Carmarthenshire and 560th in Wales for this domain. In **Gorslas 2** the Physical Environment domain is also the most prominent ranking 23rd in Carmarthenshire and 381 in Wales.

Gorslas 1 – Drefach Gorslas 2 – Maes yr Yrfa School

LSOA	Overall Index		Domains: Income		Employment		Health		Education		Housing		Access to Services		Physical Environment		Community Safety	
	75	1091	71	1133	72	1022	71	1001	65	1079	100	1552	46	351	37	560	89	1732
Gorslas 1	75	1091	71	1133	72	1022	71	1001	65	1079	100	1552	46	351	37	560	89	1732
Gorslas 2	58	927	74	1160	41	655	91	1329	64	1060	71	1170	41	313	23	381	51	1306

Source: Welsh Index of Multiple Deprivation 2011 (released August 2011), Welsh Assembly Government.

Note: LSOAs ranked 1-112 (Carmarthenshire), 1-1896 (Wales).

CRIME

Gorslas	Offence Group										Annual Total
	Violence against the Person	Sexual Offences	Robbery	Burglary	Auto crime	General Theft	Fraud and Forgery	Criminal Damage	Drug Offences	Other	
2008/2009	12	4	0	10	9	13	0	23	17	0	88
2009/2010	28	1	0	7	4	15	8	12	22	0	97
2010/2011	15	2	0	7	2	21	1	5	32	2	87
2011/2012	17	3	0	9	8	14	2	18	34	0	105
2012/2013	14	9	0	6	5	6	2	11	36	2	91
2013/2014	11	2	0	8	5	17	0	1	18	1	63

Source: Dyfed Powys Police, Headquarters, Llangunnon.

For further information please contact:

Lesley Rees, Policy & Research Officer

01267 224462

llrees@carmarthenshire.gov.uk